

# LOS PRADOS PRIMEROS

## SAN MATEO

### SAN MATEO COUNTY, CALIFORNIA

## OWNER'S CERTIFICATE

We hereby certify that we are the owners of, or have some right, title or interest in and to the real property included within the subdivision shown upon this map; and that we are the only persons whose consent is necessary to pass a clear title to said property, and we consent to the making of said map and subdivision as shown within the blue border lines; and we hereby dedicate for public use all Streets and Roads as shown on said map within said subdivision.

We also hereby dedicate for public use all easements for public utilities, anchors and for drainage purposes under, on or over those certain parcels of land designated as "P.U.E.", "A.E." and "S.D.E." respectively on said map within said subdivision; such parcels of land to be kept open and free from buildings and structures of any kind.

We also hereby dedicate for public use easements for wire clearance over those certain parcels of land designated as "W.C.E." on said map within said subdivision.

## AS OWNERS

ARCHER DEVELOPMENT CORP., a California corporation

Douglas A. Simonson President  
Henry A. Simonson ASST. SEC'Y.

## AS TRUSTEES

CITY TITLE INSURANCE COMPANY, a California corporation

Louisa A. Simonson W.C. Downs  
VICE-PRESIDENT ASST. Secretary.

STATE OF CALIFORNIA  
COUNTY OF LOS ANGELES, s.s.

On this 12<sup>th</sup> day of MARCH, 1959, before me, WYONA F. GROTBECK, a Notary Public in and for the County of Los Angeles, State of California, residing therein, duly commissioned and sworn, personally appeared DAVID A. SIMONSON, known to me to be the PRESIDENT and LEROY A. FERRIN, known to me to be the ASST. SEC'Y of the ARCHER DEVELOPMENT CORP., the corporation that executed the within instrument, and known to me to be the persons who executed the same upon behalf of the corporation named therein and acknowledged to me that such corporation executed the same.

IN WITNESS WHEREOF, I have hereunto set my hand and affixed my official seal, the day and year in this certificate first above written.

My Commission Expires: WYONA F. GROTBECK  
DECEMBER 14, 1959 Notary Public in and for the County of Los Angeles, State of California

STATE OF CALIFORNIA  
COUNTY OF SAN MATEO, s.s.

On this 16<sup>th</sup> day of March, 1959, before me, Grace G. Jompelis, a Notary Public in and for the County of San Mateo, State of California, residing therein, duly commissioned and sworn, personally appeared Leonard Joesten, known to me to be the Vice President and W.C. Downs, known to me to be the ASST. Secretary of the CITY TITLE INSURANCE COMPANY, the corporation that executed the within instrument, and known to me to be the persons who executed the same upon behalf of the corporation named therein and acknowledged to me that such corporation executed the same.

IN WITNESS WHEREOF, I have hereunto set my hand and affixed my official seal, the day and year in this certificate first above written.

My Commission Expires: Grace G. Jompelis  
NOV. 19, 1960 Notary Public in and for the County of San Mateo, State of California

WILSEY AND HAM - ENGINEERS & PLANNERS  
SCALE: 1"=100' JANUARY, 1959

## BASIS OF BEARINGS

"UNIT No. 1 WESTSHORE SAN MATEO SAN MATEO COUNTY, CALIFORNIA", as recorded in the office of the County Recorder of said County.

All distances and dimensions are shown in feet and decimals thereof.

The blue border indicates the boundaries of the land subdivided by this map.

- Indicates Standard Concrete Monument to be set in handhole
- Indicates existing Concrete Monument
- "P.U.E." Indicates Public Utilities Easement
- "S.D.E." Indicates Storm Drain Easement
- "W.C.E." Indicates Wire Clearance Easement
- "A.E." Indicates pole line Anchor Easement
- "I.E." Indicates Ingress and Egress Easement

## CITY CLERK'S CERTIFICATE

I, WM. J. O'FARRELL, City Clerk of the City of San Mateo, State of California, hereby certify that the City Council of said City at its regular meeting held on the 16<sup>th</sup> day of MARCH, 1959, duly approved the map shown hereon, authorized its recordation and accepted on behalf of the public all Streets, Roads and Utilities Easements as shown and designated on said map as being offered for dedication for public use in conformity with the terms of said offer of dedication.

Dated: MARCH 27, 1959

William J. Farrell  
City Clerk of the City of San Mateo, California

## CITY ATTORNEY'S CERTIFICATE

Approved as to form.

By: Arthur H. Hayford  
City Attorney

## CITY ENGINEER'S CERTIFICATE

I, N.B. Smith, City Engineer of the City of San Mateo, State of California, hereby certify that I have examined this map; that the subdivision as shown hereon is substantially the same as it appeared on the tentative map and any approved alterations thereof; that all of the provisions of the California "Subdivision Map Act of 1943", as amended, and any local ordinance applicable at the time of approval, have been complied with; and that I am satisfied that this map is technically correct.

Dated: Mar 24, 1959

N.B. Smith  
City Engineer - City of San Mateo

## ENGINEER'S CERTIFICATE

I, C.T. Blair, Registered Civil Engineer of the State of California, hereby certify that this map correctly represents a survey made under my direction during the month of December, 1958; that said survey is true and complete as shown; that the monuments are of the character and occupy the positions indicated (or will be set in such positions) and are (or will be) sufficient to enable the survey to be retraced.

Dated: March 16, 1959

C.T. Blair  
C.T. Blair - Registered Civil Engineer - Reg. No. 8724

## CITY PLANNING COMMISSION'S CERTIFICATE

The City Planning Commission of the City of San Mateo, at its regular meeting held on the 26<sup>th</sup> day of January, 1959, duly approved the within map entitled "LOS PRADOS PRIMEROS" and does hereby recommend to the City Council of said City that said map be approved.

City Planning Commission of the City of San Mateo

By: Cecil H. Wells Jr. Chairman  
W. H. Bunde Secretary

## COUNTY RECORDER'S CERTIFICATE

Filed for record at the request of CITY TITLE INSURANCE CO. this 6<sup>th</sup> day of APRIL, 1959, at 13 minutes past 4 P.M. in Volume 51 of Maps at page 586, Records of San Mateo County, California.

FILE No. 36243 R.

By: Charles B. Bartaux  
Chief Deputy

Ruth Korte  
County Recorder



U/G 539  
SEE ALSO: 101 PG 77 (362)

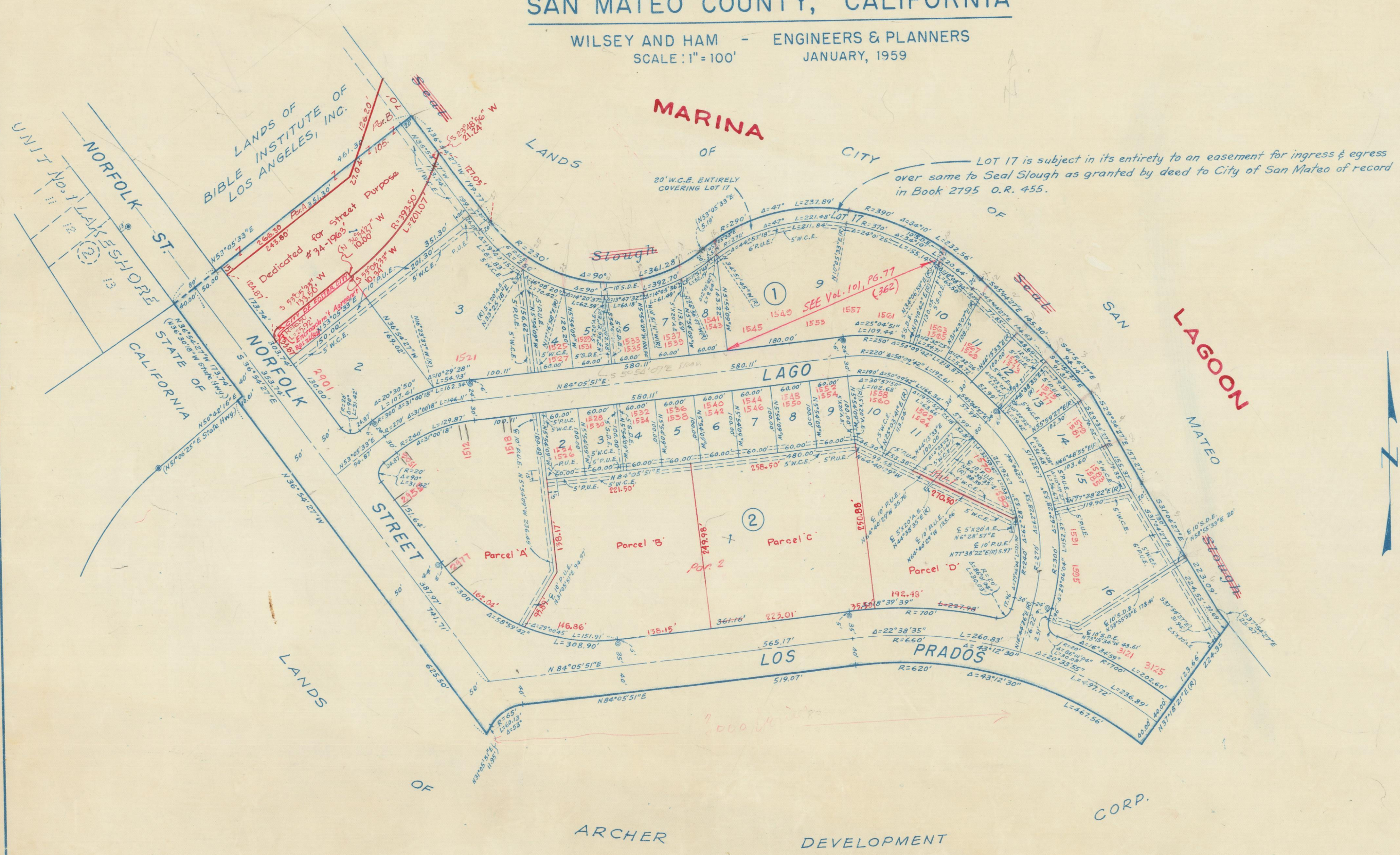
167-D

VOL 51

VOL 51

# LOS PRADOS PRIMEROS SAN MATEO SAN MATEO COUNTY, CALIFORNIA

WILSEY AND HAM - ENGINEERS & PLANNERS  
SCALE: 1"=100'  
JANUARY, 1959



LOT 17 is subject in its entirety to an easement for ingress & egress over same to Seal Slough as granted by deed to City of San Mateo of record in Book 2795 O.R. 455.